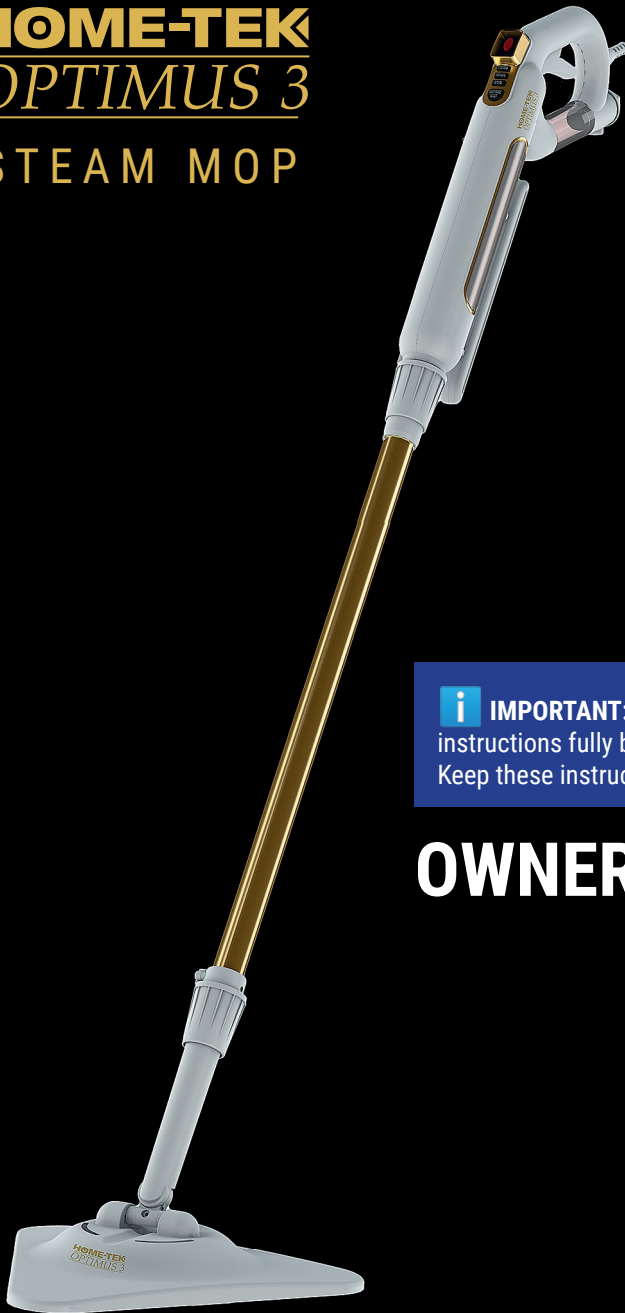


HOME-TEK
OPTIMUS 3
STEAM MOP

JAL701
JAL702
JAL703
JAL704



i **IMPORTANT:** Please read these instructions fully before using this product. Keep these instructions for future use.

OWNER'S GUIDE

ANOTHER QUALITY PRODUCT FROM HOME-TEK
THE HOME OF INNOVATION

www.home-tek.uk

IMPORTANT SAFEGUARDS

⚠ WARNING: To reduce the risk of fire, electric shock, or injury, read all safeguards and instructions carefully before using this product and retain it for future reference.

When using an electrical appliance, basic precautions should always be observed, including the following:

1. DO NOT leave the appliance connected to an electrical outlet when it is not in use.
2. Before using, make sure the appliance is filled with water.
3. DO NOT operate this appliance if the cord or plug has been damaged or after the appliance has malfunctioned in any manner.
4. Never disconnect the cord by pulling it from the outlet; grasp the plug and pull to disconnect.
5. DO NOT pull or carry by the cord; use the cord as a handle, close a door on the cord or pull the cord around sharp corners or edges.
6. DO NOT allow the cord to make contact with hot surfaces.
7. DO NOT use extension cords or outlets with an inadequate current rating.
8. Care should be taken to arrange the cord so that it can not be pulled or tripped over.
9. The appliance must not be immersed in water for cleaning.
10. DO NOT immerse the cord, plug or main unit into water or other liquids.
11. DO NOT handle the plug or steam cleaner with wet hands or operate it without suitable footwear.
12. Use only as described in this manual. Use only the manufacturer's recommended accessories.
13. DO NOT treat it as a toy. Close attention is necessary when used near children, pets or plants.
14. Never put products containing perfumes, alcohol or detergent into the appliance; this will cause damage, make it unsafe and invalidate your warranty.
15. Unplug the appliance from the electrical outlet before refilling the water tank, adding or removing components or cleaning.
16. Never turn the appliance over on its side when using steam.
17. Never direct steam towards people, animals or plants.
18. DO NOT use the appliance in an enclosed space filled with vapours given off by oil-based paint, paint thinner, some moth-proofing substances, flammable dust, or other explosive and toxic vapours.
19. DO NOT touch the hot surface or steam. There is a danger of scalding. Do not block the appliance's openings.

⚠ CAUTION: This appliance can be used by persons with reduced physical, sensory or mental capabilities or lack of experience and knowledge if they have been given supervision or instruction concerning the use of the appliance in a safe way and understand the hazards involved. Children shall not play with the appliance.

IMPORTANT SAFEGUARDS

20. Steam must not be directed towards equipment containing electrical components. Turn off and allow all the steam to escape before unplugging from the electrical outlet. Allow the appliance to cool down completely before storing. Loop the cord loosely around the cable hooks when storing.
21. Store indoors. DO NOT expose the appliance to rain or a damp atmosphere.
22. The carpet glider attachment is for use on carpets only. DO NOT use the carpet glider on hard floor surfaces.
23. DO NOT operate the appliance if the main cord or plug is damaged; in order to avoid a hazard, it must only be replaced by the manufacturer or their service representative, as special tools and/or parts are required.
24. If the supply cord is damaged, it must be replaced by the manufacturer, its service agent or similarly qualified persons in order to avoid a hazard.
25. The appliance shall not be left unattended while connected to the supply mains.
26. The appliance is not to be used if it has been dropped, if there are visible signs of damage or if it is leaking.
27. Keep the appliance out of reach of children when it is energized or cooling down.
28. Do not use in swimming pools containing water.

⚠ WARNING: Surfaces are liable to get hot during use.

⚠ IMPORTANT: Please ensure that the voltage shown on the rating plate of your appliance corresponds with your household electricity supply which must be AC (Alternating Current). Appliances are supplied with a fitted plug. If the electrical sockets in your home are not suitable for the plug fitted to this appliance, the plug should be removed and an appropriate one fitted by a qualified person.

⚠ WARNING: Any plug removed from the mains lead, if severed, must be destroyed, as a plug with a bared flexible cord is hazardous if engaged into a live socket.

⚠ NOTE: Waste electrical products should not be disposed of with household waste. Please recycle where facilities exist. Check with your Local Authority.

⚠ WARNING: STEAM GENERATED, DANGER OF SCALDING.

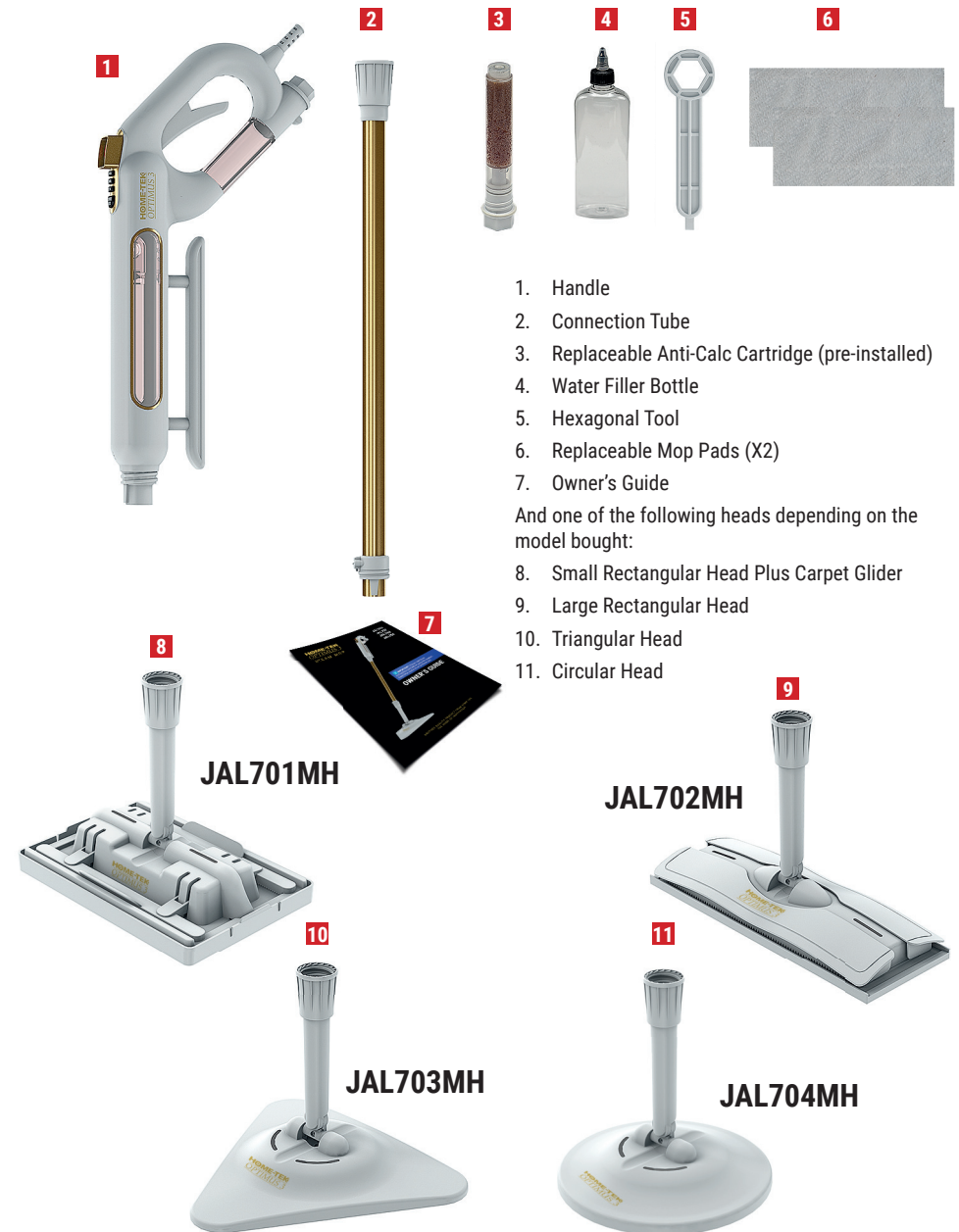


HOME-TEK OPTIMUS 3 STEAM MOP MODELS



⚠ WARNING: HOUSEHOLD USE ONLY. These products must be used solely for domestic purposes.

BOX CONTENTS



IDENTIFYING THE PARTS AND SPECIFICATIONS

⚠ CAUTION: The force and heat of the steam may adversely affect certain materials. Always check if the surface is suitable by testing on a hidden area.

Examples (for guidance only):

1. Varnished wood or glossy leather can be bleached by the effects of steam.
2. Shiny plastic materials and wax-treated floors can become tarnished by steam.
3. Acrylic, velvet and linen are very sensitive to the temperature of steam.
4. DO NOT use on unsealed wood floors, or floors where the sealing may have worn away or is damaged.

⚠ CAUTION: DO NOT let the unit stand on any wood or poly-laminate floor for an extended period of time.

⚠ WARNING: Surfaces are liable to get hot during use.

⚠ WARNING: HOUSEHOLD USE ONLY. These products must be used solely for domestic purposes.

⚠ IMPORTANT: Ensure the safety precautions on the previous pages and the caution above are understood. Save these instructions.

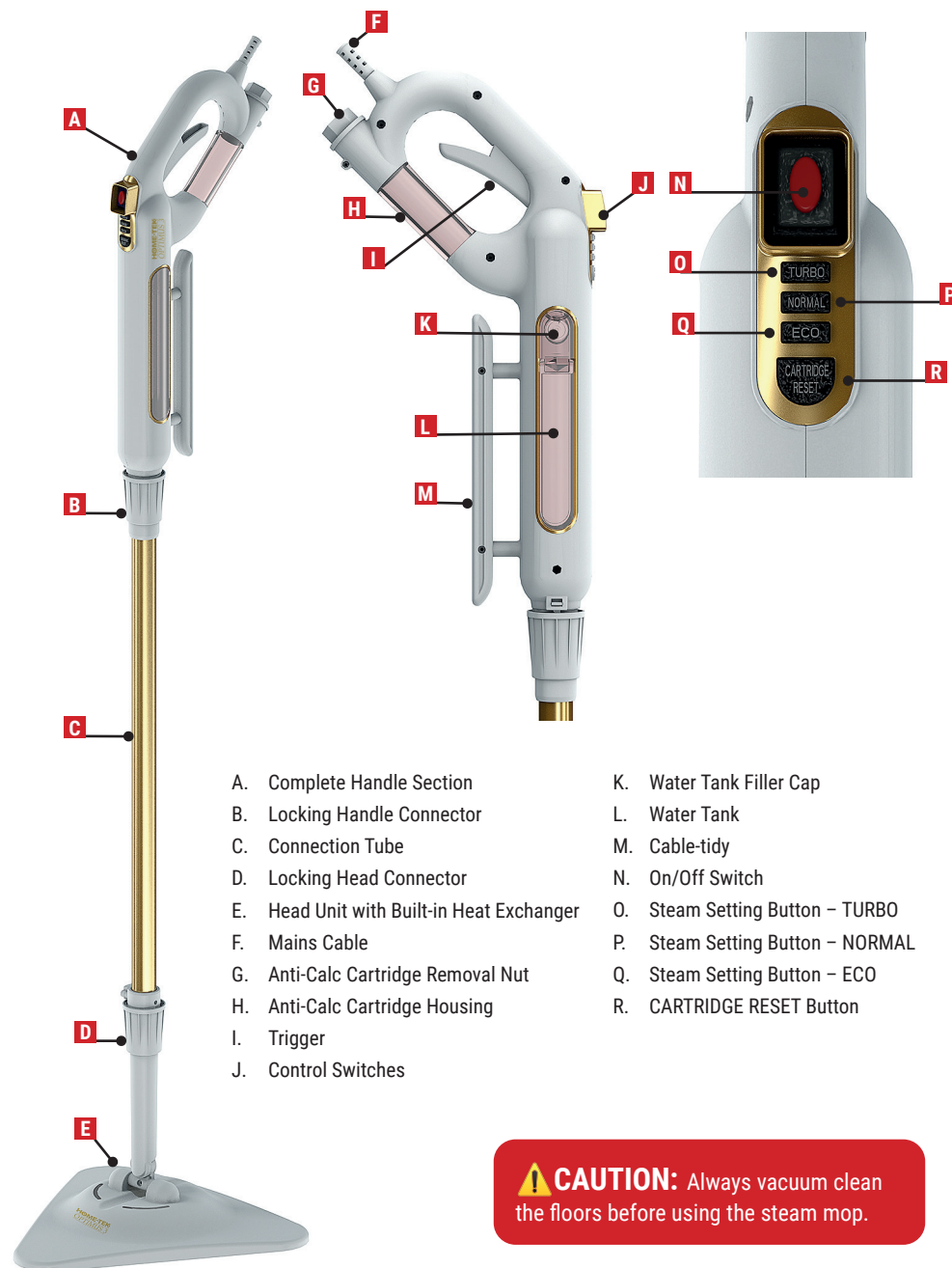
The Steam Mop is a new way of cleaning that is effective and hygienic. High-temperature steam can make removing stubborn household dirt easier and kill dust mites and many types of bacteria when used correctly. To clean a specific area, position the steamer over the area for a minimum of eight seconds. Use this procedure to clean and sanitise the floor near or in the bathroom, food preparation areas, pet sleeping quarters, and many more suitable areas at home.

HOME-TEK OPTIMUS 3 STEAM MOP TECHNICAL SPECIFICATIONS

Height – Assembled	125cm	Water Tank Capacity	270ml
Cable Length	5m	Steam Temperature	120°C
Weight (without water)	1.9kg	Steam Ready Time	20-30 seconds
Voltage Supply	100V	Max. Continuous Operation	20 minutes
Wattage	1200W		

The manufacturer accepts no liability for damage caused to objects, materials, persons or animals due to the inappropriate use of steam or through non-compliance with the advice and recommendations shown in the pages of this instruction manual and the specific advice given above.

IDENTIFYING THE PARTS AND SPECIFICATIONS



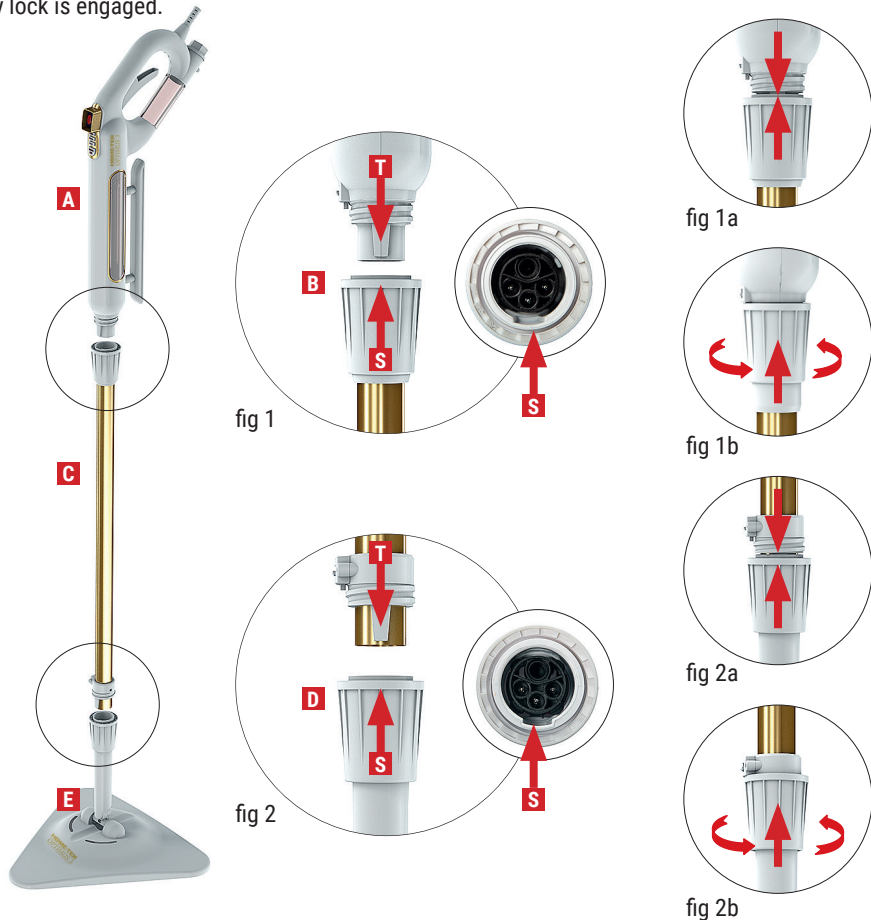
⚠ CAUTION: Always vacuum clean the floors before using the steam mop.

! IMPORTANT: Failure to follow these instructions may damage the product and will invalidate the warranty.

1 ASSEMBLING YOUR STEAM MOP

To assemble your steam mop insert handle (A) into the connection tube (C) by aligning the tag (T) on the handle and slot on the connection tube (S)(fig 1). Push firmly in place (fig 1a). Tighten the locking cover (B) by turning it anticlockwise (fig 1b). Please, do not over-tighten; you will hear a final click once the safety lock is engaged.

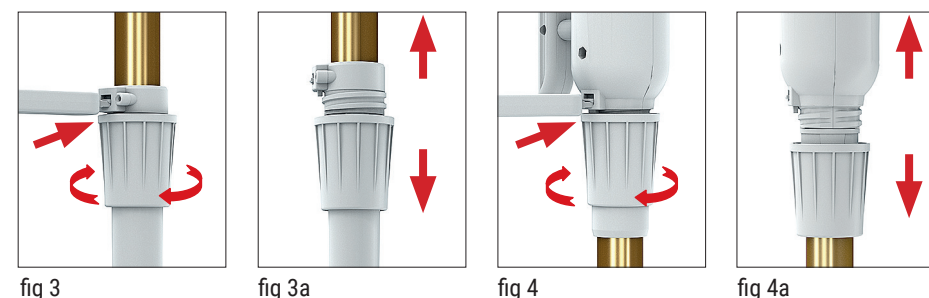
Then fit the mop head (E) to the connection tube (C). Align the tag (T) on connection tube with the slot (S) on the mop head (fig2). Push firmly in place (fig 2a) and turn the locking cover (D) anticlockwise to tighten(fig2b). Please, do not over-tighten; you will hear a final click once the safety lock is engaged.



2 CHANGING MOP HEADS AND RELEASING HANDLE

To release the mop head from the connection tube, insert the tip of the hexagonal tool into the safety lock slot to push the tag upwards to disengage the safety lock and turn the locking cover clockwise (fig 3). Once the locking cover is loose, carefully pull the connection tube and mop head apart (fig 3a).

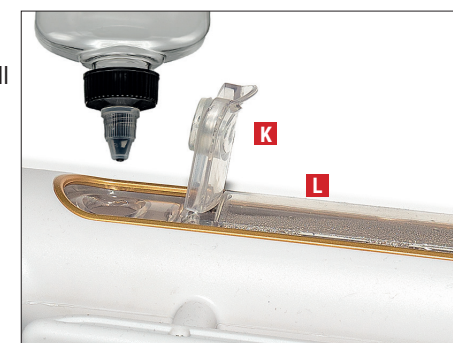
To release the handle from the connection tube, insert the tip of the hexagonal tooling into the safety lock slot to push the tag upwards to disengage the safety lock and turn the locking cover clockwise (fig 4). Once the locking cover is loose, carefully pull the connection tube and handle apart (fig4a).



3 FILLING THE WATER TANK

During use, when the water in the tank is used up, the built-in red LED light will flash. Please fill it with clean water, then press the handle trigger(I). The LED light will go out and continue to use.

The water tank (L) can be filled at any time. Lift the filler cap (K) and fill the water tank with the filler bottle provided. However, any clean jug can be used to fill the water tank. After filling close the filler cap.



! IMPORTANT: Never put anything inside the water tank except water. DO NOT ADD CHEMICALS OR CLEANING AGENTS!

! IMPORTANT: DO NOT use the steam mop without adequate water in the water tank.

OPERATING INSTRUCTIONS

⚠ WARNING: Always turn off all the switches when refilling with water, changing a cleaning pad, or replacing a cartridge – and always unplug the product after use. Let the appliance cool before changing the mop pads.

4 CLEANING PADS

701MH and 702MH: The mop cleaning pad is held in position by special hinged gripping strips (GS). Secure the mop pad with the front gripper and gently pull to remove any wrinkles before engaging the back gripper to secure the pad. To remove the pad for cleaning, raise the gripping strips and remove the pad.



⚠ CAUTION: The steam mop must be switched off before placing into the Carpet Glider.

i IMPORTANT: We only recommend the use of genuine Home-tek spare pads.

OPERATING INSTRUCTIONS

703MH and 704MH: The mop cleaning pad is held in position by special hooks under the mop head and loops on the reverse side of the pads. Place the back of the mop pad on these hooks making sure mop pad is flat and wrinkle-free. To remove the pad simply peel it off from the hooks.



⚠ CAUTION: DO NOT leave the appliance in one area when hot.

⚠ CAUTION: DO NOT use the steam mop without a cleaning pad fitted.

⚠ CAUTION: Test a small hidden area for compatibility. DO NOT allow the steam mop to stand stationary on one spot, the heat may damage fibres or polished surfaces.

i IMPORTANT: To clean the microfibre pads, just machine wash, (max. temp 60° C) or hand wash in hot soapy water and rinse. DO NOT use bleach, fabric softener OR tumble dry.

i IMPORTANT: Should you experience stubborn stains on your floor, it is possible to dampen the stain with detergent before steaming it with your mop, but do ensure that the detergent is compatible with the surface being cleaned.

OPERATING INSTRUCTIONS

5 CARPET GLIDER

The carpet glider is only required when sanitising and refreshing your carpets or cleaning rough surfaces. Place the carpet glider on the floor and place the steam mop with the attached cleaning pad. Note: Carpet glider (CG) does not clip onto the steam mop. The mop head simply sits in the carpet glider.

CAUTION: The steam mop must be switched off before placing into the Carpet Glider. Test a small hidden area of carpet for compatibility. DO NOT allow the steam mop to stand stationary on one spot, the heat may damage fibres.



6 POWER CABLE

Before using the appliance, completely release the full length of the power cable.

7 CONTROL BUTTONS

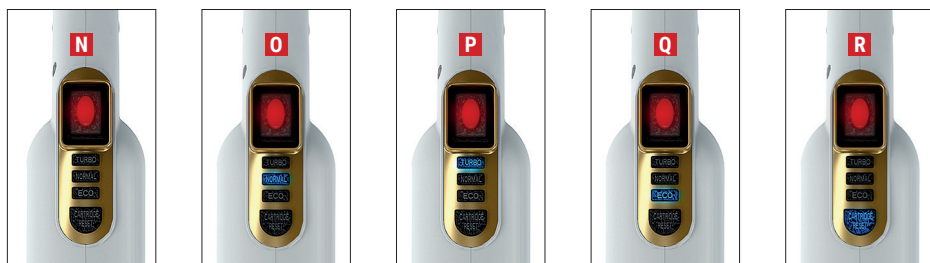
ON/OFF (N): Press to activate the pump and the heater.

NORMAL (O): For most cleaning jobs around the home.

TURBO (P): For more stubborn cleaning jobs. Press to increase the steam rate.

ECO (Q): For lighter cleaning work. Press to reduce the steam rate and use less water.

CARTRIDGE RESET (R): When flashes, it indicates that anti-calc cartridge needs replacing and mop will stop working. After replacing the cartridge press 3 seconds for mop to work again.



WARNING: Always turn off all the switches when refilling with water, changing a cleaning pad, or replacing a cartridge – and always unplug the product after use.

OPERATING INSTRUCTIONS

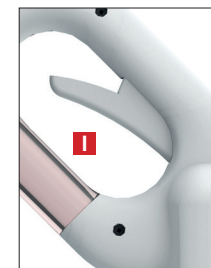
8 USING THE STEAM MOP

To start cleaning, press the red power on/off button to activate the pump and the heater. The mop will automatically default to the "NORMAL" setting, and button will glow blue.

The steam mop will need 20-30 seconds for the heater to reach temperature. At this point, steam can be released by lightly squeezing the operating trigger (I). Squeezing the trigger every few seconds will release water to the pump to create more steam.

The green light on the mop head will light up intermittently during the operation. This is normal as this is a "Steam Ready" light which indicates when the heat exchanger is operating.

Once the steam mop is generating steam, operate it by passing it slowly over the surface to be cleaned. This is the ideal method to thoroughly clean your floor. On some rough surfaces it may only be possible to pull the appliance backwards.



CAUTION: Test a small hidden area for compatibility. DO NOT allow the steam mop to stand stationary on one spot.

CAUTION: Always vacuum clean the floors before using the steam mop.

9 ANTI-CALC CARTRIDGE ALERT AND REPLACING CARTRIDGE

The steam mop has a special alert system to prevent calcium deposits from damaging the heat exchanger. When the cartridge needs replacing the "CARTRIDGE RESET" button will flash and the pump will not work. At this point a new cartridge needs to be installed and then the "CARTRIDGE RESET" button needs to be pressed for 3 seconds to allow the steam mop to function again.

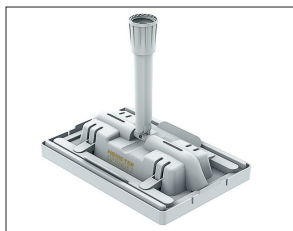
To replace the cartridge simply unscrew the old cartridge with the tool provided. Install a new cartridge and use the tool provided to tighten the cartridge firmly into place. Do not over tighten.

Replacement cartridges are available from Home-tek Customer Service on 01924 481053 or from www.advancedhomewares.co.uk.



CAUTION: Attempt to bypass and use the mop when the anti-calc cartridge needs replacing invalidates your warranty.

SPARES, OPTIONAL EXTRAS AND MICROFIBRE PADS



JAL701MH Small Rectangular Head including Carpet Glider



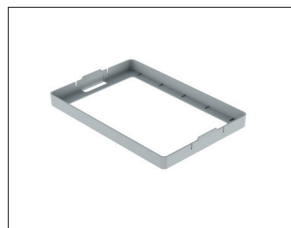
JAL702MH Large Rectangular Head



JAL703MH Triangular Head



JAL704MH Circular Head



JAL701CG Carpet Glider for JAL701MH Small Rectangular Head



Anti-Calc Replacement Cartridge



Water Refill Bottle



Hexagonal Tool



701MP2 Mop Pad for JAL701MH (two pads per pack)



702MP2 Mop Pad for JAL702MH (two pads per pack)



703MP2 Mop Pad for JAL703MH (two pads per pack)



704MP2 Mop Pad for JAL704MH (two pads per pack)

i IMPORTANT: We only recommend the use of genuine Home-tek mop pads.

MAINTENANCE, CLEANING AND TROUBLE SHOOTING

CLEANING AND MAINTENANCE

1. The unit must be turned off and unplugged from the electrical outlet and allowed to cool down before all cleaning and maintenance tasks on the appliance.
2. Use a damp sponge or cloth to clean the housing.
3. Do not immerse the unit in water.

TROUBLE SHOOTING

Your Steam Mop has no power

- Check to see if the steam mop is plugged correctly into the mains socket and that the socket is properly working.
- Try another socket if there is still no power to the steam mop. Your steam mop should be securely plugged only into a 240V AC socket.

Your Steam Mop is not steaming

- Ensure that there is water in the water tank.
- Check that the filter cartridge is fully secured and tightened in place.
- If you have replaced the cartridge, please ensure that you have pressed the reset button.
- Ensure that the unit is switched on and that you have selected the steam setting you require.
- Ensure that the steam outlets on the base of the mop head are not blocked.
- Note: If you want a more powerful steam output, please use the Turbo setting.

Your Steam Mop is leaving the floor wet

- Ensure that the mop pad is not too wet or dirty. Please replace the wet or dirty pad with a new one.
- Do not squeeze the trigger constantly.

For any other queries, please contact our customer service team.

GUARANTEE AND SERVICE INFORMATION

Your Home-tek Optimus 3 Steam Mop is fully guaranteed for ONE year from the date of original purchase against any deficiency or fault in manufacture.

This guarantee in no way prejudices your rights under common law and is offered as an addition to consumers' statutory rights.

This guarantee does not cover normal wear and tear, damage caused by overloading, negligence, accident or improper use.

Any change or modification made by the purchaser or user to the appliance will invalidate the guarantee, as would any attempted repair.

Consumables such as cleaning pads and anti-calc cartridges are not covered under this warranty.

The guarantee applies only when the appliance has been operated in accordance with the instructions and connected to an electricity supply that matches that shown on the appliance's rating plate.

The guarantee will be rendered invalid if the product is resold. The product must be used solely for domestic purposes.

If your appliance requires attention, please:

1. Firstly, check these instructions point by point and make sure the problem is not one you can easily rectify yourself.
2. If you can not solve the problem, contact the company you purchased the product from, as your contract in the first instance is with the retailer. Refer to your receipt or financial statements for details of the retailer and contact them directly. They will help with advice, repair or replacement as required.

Email: luxour777@gmail.com
Telephone: 050-3154-1110

3. If your retailer is unable to provide help, then please contact Home-tek Customer Service as below:

Email: consumer-services@home-tek.uk
Telephone: 044-1924 481053

In order to enjoy the benefits of the One-year guarantee, please make sure you keep your proof of purchase safe at all times, as this will be needed if you require your product repairing during the guarantee period.

HOME-TEK
OPTIMUS 3

PLEASE NOTE, DUE TO OUR CONTINUED DEVELOPMENT OF PRODUCTS, WE RESERVE THE RIGHT TO ALTER PRODUCT SPECIFICATIONS.

"Home-tek" and the Home-tek logo are registered trademarks. Home-tek products are exclusively imported and distributed in Japan By:

S&I

Terajima 46-7, Toyama-shi
Toyama-ken, 930-2225,
Japan